

# Technical data sheet

## Product features



### Cooling cabinet 700 l LED light, GN 2/1, stainless steel

<b>Model</b>	<b>SAP Code</b>	00012361
--------------	-----------------	----------



- GN / EN size in device: GN 2/1
- Chamber volume [l]: 458
- Minimum device temperature [°C]: -2
- Maximum device temperature [°C]: 7
- Insulation thickness [mm]: 90
- Control type: Digital
- Interior lighting: Yes
- Door lock: Yes
- Automatic defrost: Yes
- HACCP: Yes
- Annual energy consumption [kWh]: 332

<b>SAP Code</b>	00012361	<b>Gross Volume [m3]</b>	1.445
<b>Net Width [mm]</b>	847	<b>Net Volume [m3]</b>	1.298
<b>Net Depth [mm]</b>	733	<b>Number of GN / EN</b>	24
<b>Net Height [mm]</b>	2090	<b>GN / EN size in device</b>	GN 2/1
<b>Net Weight [kg]</b>	118.00	<b>Minimum device temperature [°C]</b>	-2
<b>Power electric [kW]</b>	0.130	<b>Maximum device temperature [°C]</b>	7
<b>Loading</b>	230 V / 1N - 50 Hz	<b>Refrigerant</b>	R290
<b>Chamber volume [l]</b>	458		

# Technical data sheet

Technical drawing

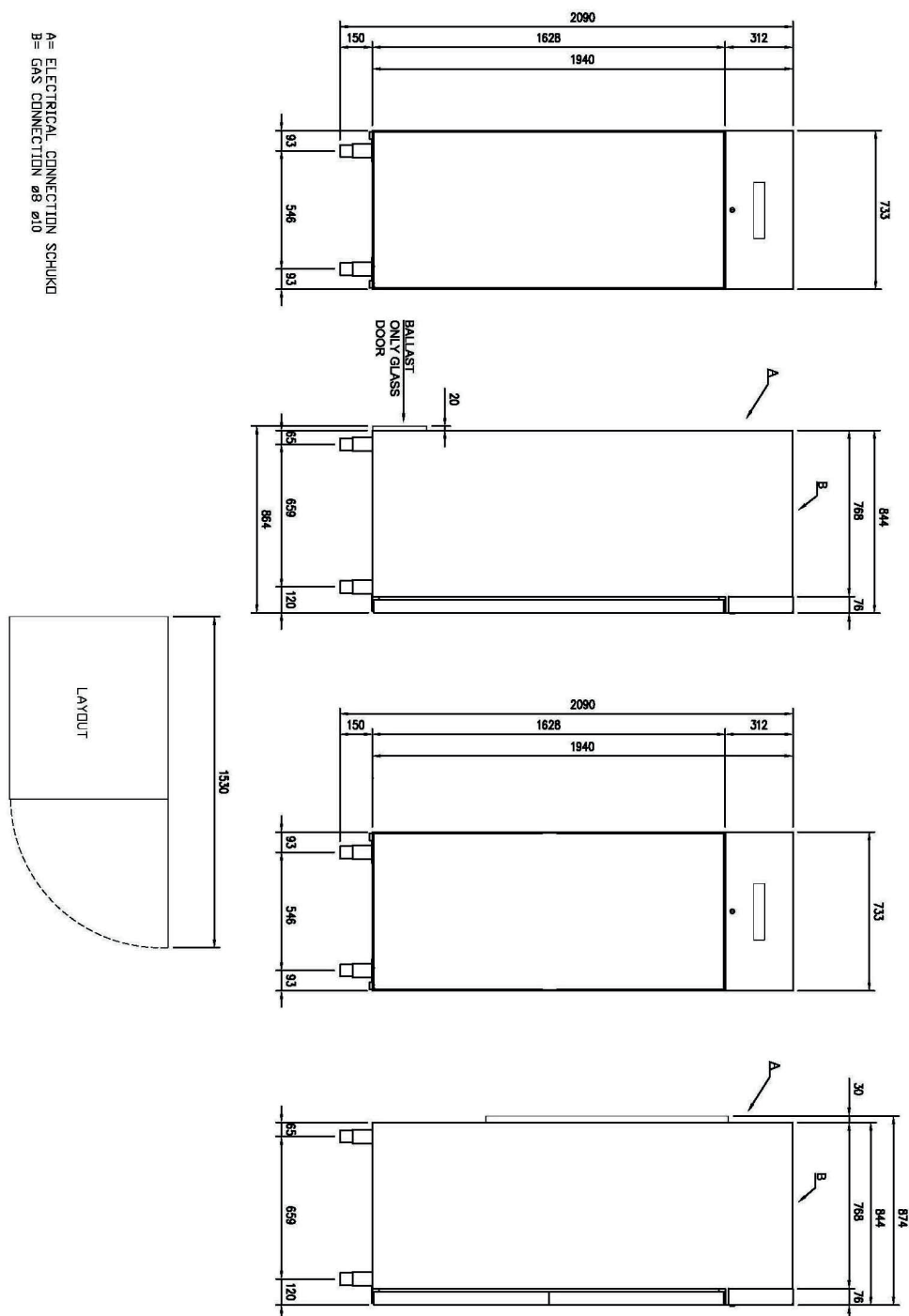


Cooling cabinet 700 l LED light, GN 2/1, stainless steel

Model

SAP Code

00012361



# Technical data sheet

## Product benefits



### Cooling cabinet 700 l LED light, GN 2/1, stainless steel

Model

SAP Code

00012361

1

#### Insulation 90mm

minimal losses  
– energy saving

2

#### Two-sided opening

location variability  
– greater operational efficiency  
– better kitchen ergonomics

3

#### All-stainless design

corrosion resistance  
– longer service life  
– health safety

4

#### Automatic defrosting

nothing needs to be watched  
– always working properly without extra operator requirements

5

#### Wheels, legs

variability  
– user comfort

6

#### High energy class

minimal energy loss  
high efficiency  
guaranteed chilled food  
– cost saving  
– hygienic safety

# Technical data sheet

Technical parameters



## Cooling cabinet 700 l LED light, GN 2/1, stainless steel

**Model**

**SAP Code**

00012361

**1. SAP Code:**

00012361

**2. Net Width [mm]:**

847

**3. Net Depth [mm]:**

733

**4. Net Height [mm]:**

2090

**5. Net Weight [kg]:**

118.00

**6. Gross Width [mm]:**

763

**7. Gross depth [mm]:**

873

**8. Gross Height [mm]:**

2170

**9. Gross Weight [kg]:**

130.43

**10. Device type:**

Electric unit

**11. Power electric [kW]:**

0.130

**12. Loading:**

230 V / 1N - 50 Hz

**13. Refrigerant:**

R290

**14. Material:**

AISI 304

**15. Exterior color of the device:**

Stainless steel

**16. Max ambient temperature [°C]:**

40

**17. Device properties 2:**

Cooling

**18. GN / EN size in device:**

GN 2/1

**19. Number of GN / EN:**

24

**20. Chamber volume [l]:**

458

**21. Gross Volume [m3]:**

1.445

**22. Net Volume [m3]:**

1.298

**23. Adjustable feet:**

Yes

**24. Insulation thickness [mm]:**

90

**25. Number of doors:**

1

**26. Unit:**

Yes

**27. Control type:**

Digital

**28. Door lock:**

Yes

# Technical data sheet

Technical parameters



Cooling cabinet 700 l LED light, GN 2/1, stainless steel

**Model**

**SAP Code**

00012361

**29. Interior lighting:**

Yes

**33. Maximum device temperature [°C]:**

7

**30. HACCP:**

Yes

**34. Automatic defrost:**

Yes

**31. Annual energy consumption [kWh]:**

332

**35. Number of grids:**

3

**32. Minimum device temperature [°C]:**

-2